



Budget Reconciliation and Potential Cuts to Medicaid Update

The House and the Senate are working toward a budget reconciliation. Both sides will release their versions of the budget and then begin negotiations. The recent budget framework still suggests that they are cutting the Medicaid budget by \$880 billion.

There are two new issues of concern:

- Work requirements
 - There is a work requirement that they added that they thought would help people with disabilities; the legislation states they are "excluding people who are medically certified as physically or mentally unfit for employment."
 - We've spent decades educating people that people with disabilities can and want to work with the proper support. Now, we will have to certify that they are incapable of working to keep Medicaid.
 - Many people with disabilities need Medicaid so that they can work. People rely on Home and Community-Based Services through Medicaid to get them ready for work and to work.
- Per capita caps or block grants
 - Recent proposals from Republican leadership on the House Budget Committee would convert federal Medicaid funding to block grants or impose per capita caps.
 - Restructuring the program in this way would strain state budgets, reduce health coverage for millions, and limit states' abilities to protect public health.
 - This also leaves little funding for optional programs such as Home and Community Based Services.

Medicaid is a lifeline to **1,625,999 Louisianians**; this includes people with disabilities, children, seniors, veterans, and military families.

What Medicaid Means for Louisianians:

- Medicaid coverage unlocks access to health care and improves health for children and adults.
- Medicaid home and community-based services (HCBS) enable people with disabilities and the elderly to live, work, and participate in their communities.

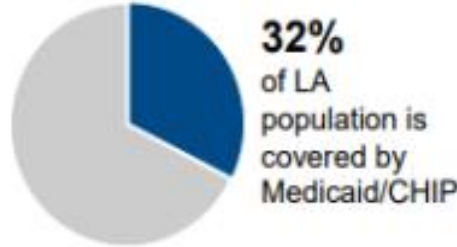
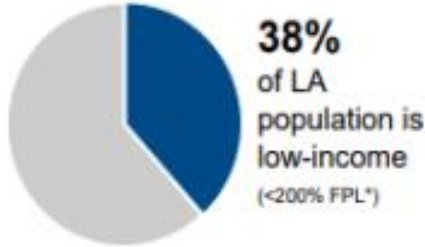
We need your help!

Adding work requirements is not the answer, and moving to block grants jeopardizes the support and services people with disabilities rely on to live in their communities. Please consider this when addressing the budget cuts to Medicaid.

MEDICAID IN LOUISIANA

August 2024

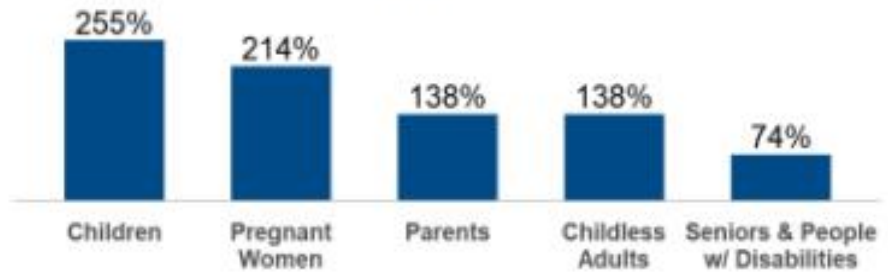
1,625,999 enrolled in LA Medicaid



LA Expansion Status:
Adopted

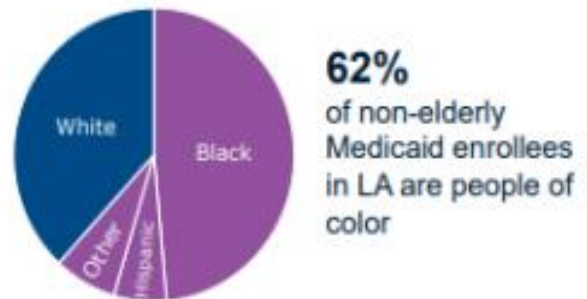
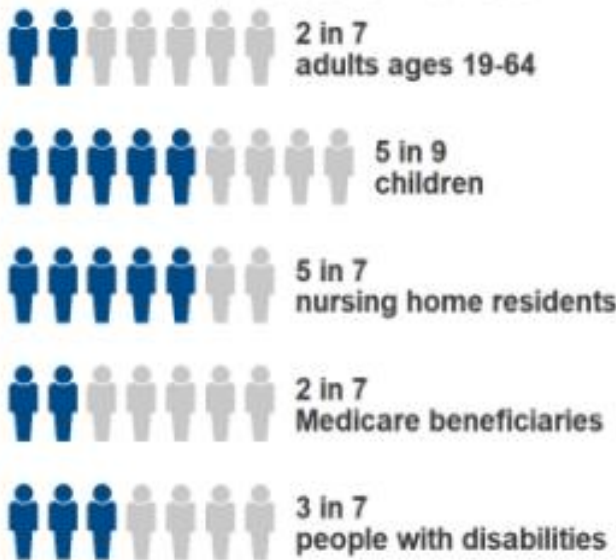
Adults in Expansion Group:
787,000

Eligibility Levels
as a % of FPL*



*100% of Federal Poverty Level (FPL): \$25,820 for a family of three; \$15,060 for an individual

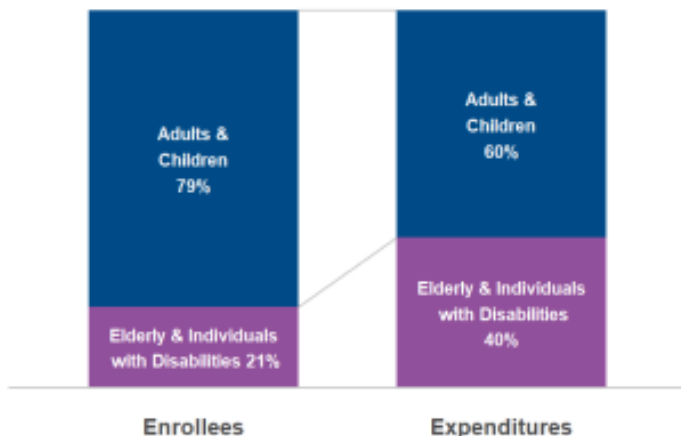
In LA, Medicaid Covers:



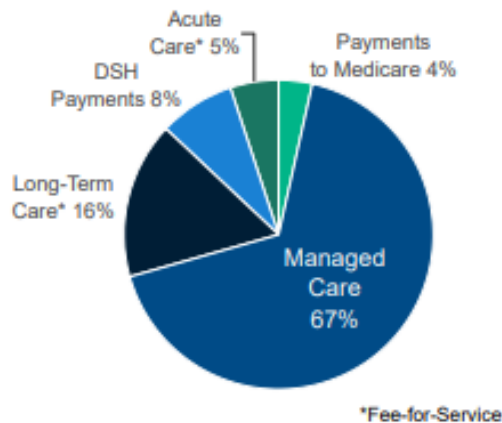
59% of adults in LA on Medicaid are working



Medicaid Enrollees & Expenditures in LA



Total LA Medicaid Spending by Service: \$14.8 billion



*Fee-for-Service

In LA, the federal government pays **68%** of the cost of traditional Medicaid.



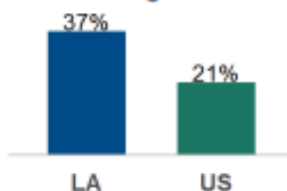
The federal government pays **90%** of the cost of the Medicaid expansion.



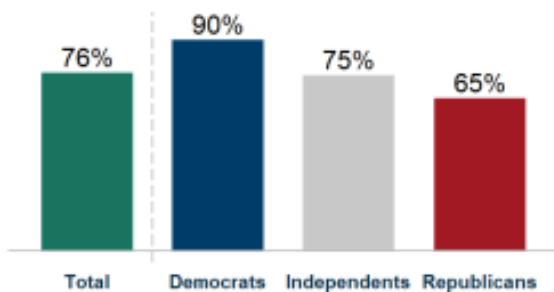
61% of births in LA are covered by Medicaid

Louisiana **has adopted** the Medicaid 12-month postpartum coverage extension

Medicaid Coverage of Women Ages 15–49



National Share of Those that Hold Favorable Views of Medicaid



National Access Measures

